



WILDLIFE AND ASSET PROTECTION PRODUCTS

PROTECTION AND PREVENTION
BEFORE YOU NEED IT

ADVANCED PROTECTION

FOR MORE RELIABLE POWER DISTRIBUTION

As building developments and roadways increase, more attention is being placed on power distribution systems and the reliability and safety of their networks. Power interruption repair costs can be substantial for the utility company, create an inconvenience for customers, and generate a financial strain on the local economy.

Major power outages can be caused by wildlife interfering with the distribution of electricity. For utility companies, the violations of bird and animal protection acts and laws can result in expensive fines. Products that help reduce wildlife electrocutions and mortality are proven to reduce costly power outages.

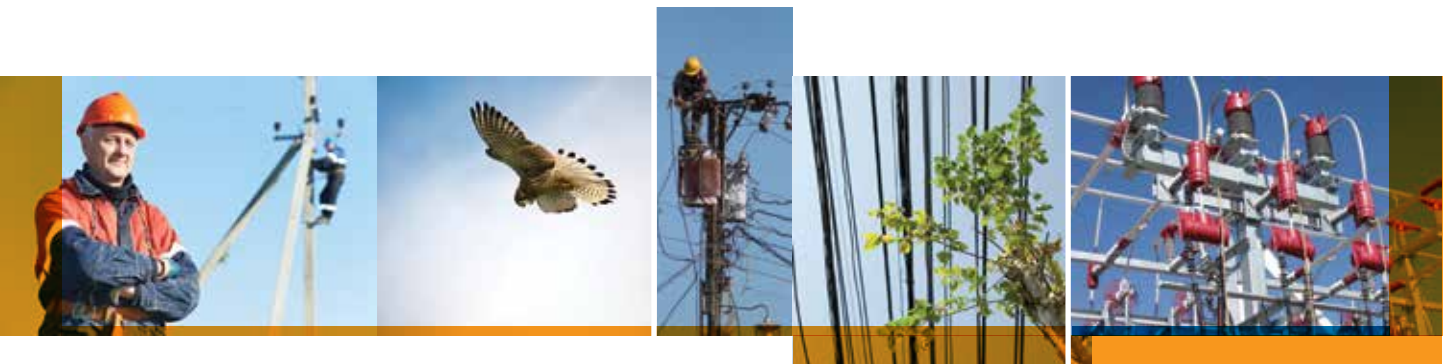
TE Connectivity (TE), an industry leader with more than 30 years of Wildlife and Asset Protection experience, understands the challenges utility companies face, as well as the stringent laws and regulations around the globe that affect the bottom line. TE offers utility companies a total product solution — a comprehensive and customizable line of high performance connectivity and insulation products. TE products can help utility companies save resources and time, and help provide their customers with long-term reliable service.

Capabilities

As a pioneer in the power distribution protection industry, TE leads the market in providing the highest standard, easy-to-install solutions that preserve energy, increase reliability and stand up to demanding conditions.

TE's total product solution line includes well-known brands like Raychem, and addresses diverse insulation for both medium and high voltage applications:

- Breaker Bushings
- Conductor and Leads
- Disconnect Switches
- Bus Support Insulators
- Recloser Apparatus
- Fuse Cutouts • Bus Bars
- Lightning Arresters
- Distribution Insulators
- Transformer Bushings



“Violations of wildlife and endangered species conservation acts could result in fines ranging from US \$5,000 to US \$500,000.”



“In the U.S. alone, bird and animal outages cost the economy an estimated US \$20 billion to \$30 billion a year.”

PROTECTING THE POWER AND THE WILDLIFE

Birds, animals, overgrown tree limbs and harsh weather often enter substations and interfere with overhead lines, causing faults by bridging air clearances. Outages occur especially on distribution equipment, where conductor spacing allows relatively small birds and animals to bridge phases. The best solution to ensure the protection of the equipment and power lines, as well as the wildlife and surrounding habitats, is to insulate the bare metalwork and create an environment for wildlife to roam substations and overhead lines without damaging themselves or the equipment.

TE's wildlife and asset protection products and systems of tubes, tapes, sheets, pre-formed covers and barriers provide a proven, cost-effective and easy-to-install solution to bird, animal and weather related outages.



“According to the U.S. Fish & Wildlife Service, power distribution lines cause an estimated 174 million bird deaths annually.”

Rapid Response Program

TE's engineers are supremely responsive to customer needs around the globe and offer a unique Rapid Response Program. Through the program, TE is able to assist utility companies with customized products within the rapid product development cycle.

- Customized design solutions
- In-house medium and high voltage test capabilities
- In-house materials development group
- Specialty formulated materials
- Dedicated engineers providing rapid/custom design solutions for unique applications

CUSTOMIZED INNOVATION

TE Connectivity (TE) is a qualified provider that fully supports customized solutions for both new and established overhead lines and substations-delivering heat shrink and cold applied products to the distribution and transmission industries. Our engineers can work with customers throughout every stage of the project, from early design to installation and training to create the best possible solution for each customer.

TE's materials science has resulted in wildlife and asset protection products that can last for over 30 years. The products have undergone rigorous UV, thermal and electrical testing and are proven to withstand the harshest environments. TE's Raychem cross-linked polymer provides superior electrical stability, high temperature strength and toughness, chemical resistance and elastic memory. TE products continue to outperform the competition in product lifespan.



Put 7,000 Engineers to Work for You

TE Connectivity (TE) has approximately 7,000 engineers and worldwide sales and customer service capabilities. TE is an industry leader in innovation bringing together expertise in materials, processes, testing, and manufacturing. The TE commitment is to provide high performance advantages and greater efficiencies in new and existing power distribution sites.

TE thoroughly understands global standards and regulations, as well as stringent government animal protection laws and acts.

Once installed, TE's wildlife and asset protection products are supported by the TE Tech Service Team* which provides a world-class support system. Our team supports customers seeking guidance or support on everything from design integration to onsite training to field supervision — all at no additional cost.

Working together, we can help you reach a better asset protection solution. For more information on TE wildlife and asset protection solutions, visit te.com/assetprotection-americas.

*Not available in all countries

TE Connectivity (NYSE: TEL) is a \$13 billion world leader in connectivity. The company designs and manufactures products at the heart of electronic connections for the world's leading industries including automotive, energy and industrial, broadband communications, consumer devices, healthcare, and aerospace and defense. TE Connectivity's long-standing commitment to innovation and engineering excellence helps its customers solve the need for more energy efficiency, always-on communications and ever-increasing productivity. With nearly 90,000 employees in over 50 countries, TE Connectivity makes connections the world relies on to work flawlessly every day. To connect with the company, visit: te.com.

- Mining
- Nuclear power plants
- OEMs
- Overhead distribution
- Petrochemical plants
- Railways
- Street lighting
- Substations
- Transmission lines
- Underground distribution
- Windfarms
- Solar
- Hydro-electric

WHEREVER ELECTRICITY FLOWS, YOU'LL FIND TE ENERGY



te.com/energy

FOR MORE INFORMATION: TE Technical Support Centers

USA:	+1 (800) 327-6996	Canada:	+1 (905) 475-6222
France:	+33 (0) 3-8058-3170	Mexico:	+52 (0) 55-1106-0800
UK:	+44 0870-8707500	Latin/S. America:	+54 (0) 11-4733-2200
Germany:	+49 (0) 89 60 89 903	Netherlands:	+31 (0) 73-6246-999
Spain:	+34 916 630 420	China:	+86 (0) 400-820-6015

te.com/energy

© 2014 TE Connectivity Ltd. family of companies. All Rights Reserved. EPP-2209-07/14. 1-1773838-2 E550 08/2014

Guroflex, Raysulate, Raychem, Simel, Bowthorpe, TE Connectivity and the TE connectivity (logo) are trademarks of the TE Connectivity Ltd. family of companies. Other logos, product and Company names mentioned herein may be trademarks of their respective owners. While TE has made every reasonable effort to ensure the accuracy of the information in this brochure, TE does not guarantee that it is error-free, nor does TE make any other representation, warranty or guarantee that the information is accurate, correct, reliable or current. TE reserves the right to make any adjustments to the information contained herein at any time without notice. TE expressly disclaims all implied warranties regarding the information contained herein, including, but not limited to, any implied warranties of merchantability or fitness for a particular purpose. The dimensions in this brochure are for reference purposes only and are subject to change without notice. Specifications are subject to change without notice. Consult TE for the latest dimensions and design specifications.